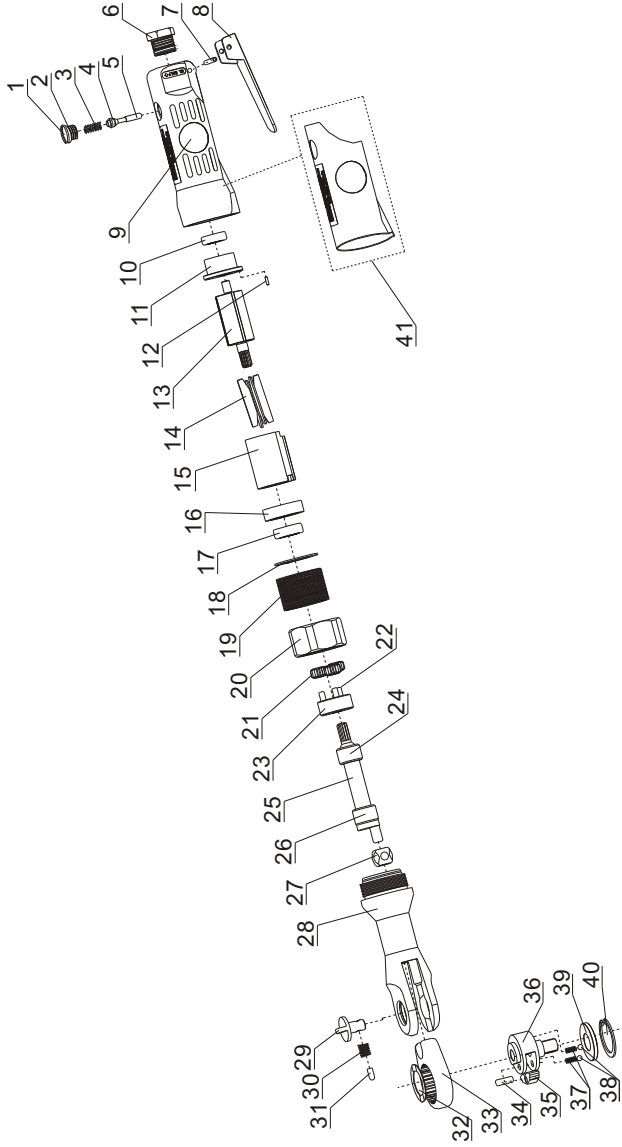


## EXPLODED DIAGRAM AND PARTS LIST



## AT-5056 **GAV** HAVALI CIRCIR

Part No.	Description	Quantity	Part No.	Description	Quantity
01	Screw nut	1	22	Bolt	3
02	O-ring	1	23	Gear bracket	1
03	Spring	1	24	Lubricating sleeve	1
04	O-ring	1	25	Bias axle	1
05	Bolt	1	26	Bearing	1
06	Air inlet	1	27	Guiding sleeve	1
07	Trigger bolt	1	28	Ratchet holder	1
08	Trigger	1	29	F/R stem	1
09	Main housing	1	30	Spring	1
10	Bearing	1	31	Topsleeve	1
11	Rear plate	1	32	Spacer	1
12	Bolt	1	33	Ratchet bracket	1
13	Rotor	1	34	Bolt	1
14	Rotor blade	4	35	Ratchet claw	1
15	Cylinder	1	36	D-type head	1
16	Front plate	1	37	Spring	2
17	Bearing	1	38	Steel ball	2
18	Spacer	1	39	Cushion	1
19	Gear sleeve	1	40	Block ring	1
20	Nut	1	41	Soft grip	1
21	Gear	3			

- Contact the distributor or sales agent from whom you purchase the tool for spare parts ordering for any necessary replacement to get continuous use of tool and for extending the tool life.
- When ordering spare parts and components, give each part number and order quantity.

GAV HAVALI EL ALETLERİ VE TEKNİK SERVİS HİZMETLERİ SAN.TİC.LTD.ŞTİ  
 TEL:0216 540 52 80  
 Thank you.